



TEST DAY

On Wednesday, March 26, 2025, the Motor Club Sabadell, organizer of the 26th Rallye La Llana – Cera Recalvi, will offer registered and non-registered teams the opportunity to participate in a test day to test their vehicles on asphalt similar to the rally's timed sections, from 9:00 a.m. to 1:00 p.m. and from 2:30 p.m. to 6:00 p.m.

The section will be set up like a rally section, with corresponding safety measures, marshalls control, and radio control along the route.

The cost for registered participants in the 26th Rallye La Llana is €220.00, and for non-registered participants, it is €260.00.

Registration fees must be paid into the following bank account: IBAN/BIC: ES44 0081 0900 8600 0256 4963 / BSAB ESBB, indicating the following in the subject line: TEST DAY REGISTRATION + DRIVER'S NAME.

To formalize registration, those interested should contact Motor Club Sabadell by sending an email with the completed form and proof of payment to mcs@motorclubsabadell.com.

Places will be limited, so it is recommended that you notify and formalize your participation as soon as possible.

Registration for the Test will close on Monday, March 24, 2025, at 8:00 PM.

Obligations:

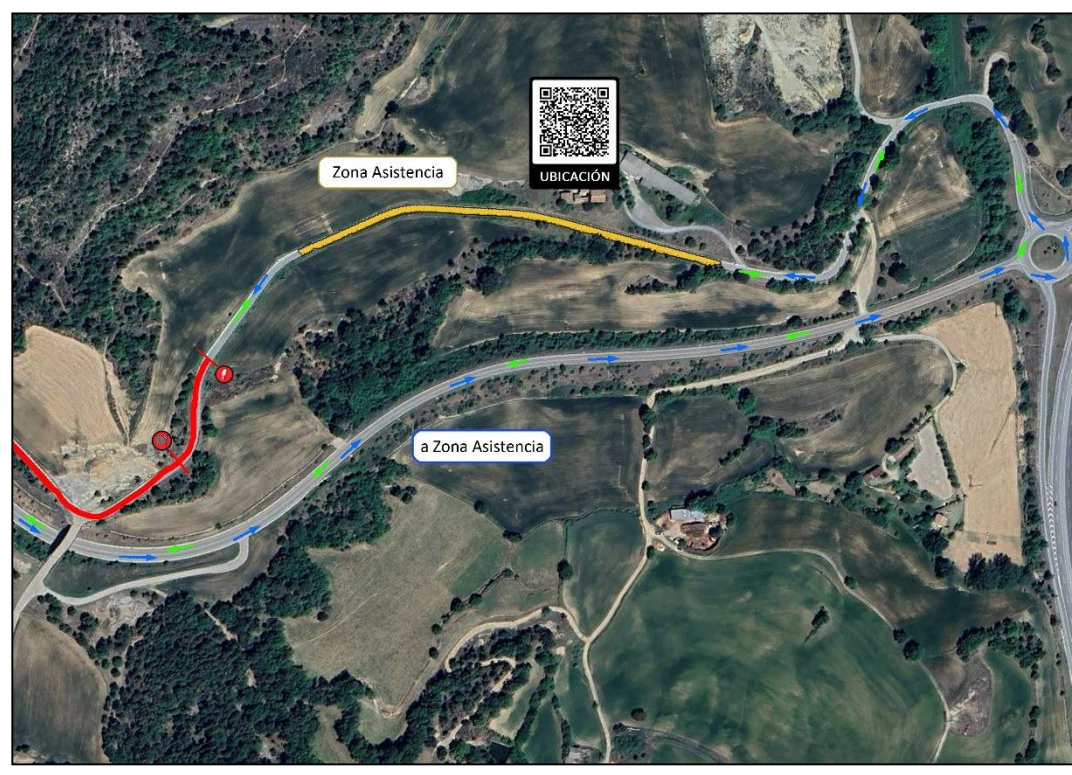
- Driver and co-driver(s) must have a valid license.
- The vehicle's safety systems will be checked by a technician.
- Driver and co-driver must wear and show the start control officials the wristband that will allow them access to the stage. This wristband will be issued before the start of the tests.
- In the event of a change of co-driver (with a valid license), the Race Director present must be notified in advance.
- In the event of an incident within the stage, the following participants must be signaled according to the regulations.
- In the event of an incident within the stage, the emergency number 681 632 624 must be notified.
- In the event of an incident within the stage, the vehicle must be removed by its own means.
- The space used in the Service Zone must be left in the same condition as before use, and any debris must be removed.

FAQ'S

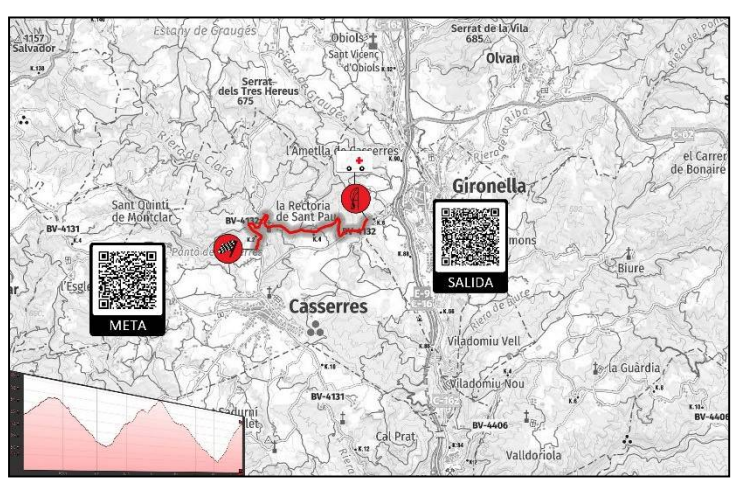
- - Stage length: 4.200 km
- - Number of passes: Free
- - Schedule: TD-1 from 9:00 a.m. to 1:00 p.m. and TD-2 from 2:30 p.m. to 6:00 p.m.
- - Stage direction: Always from start to finish (in the afternoon, the direction is reversed)
- - Start: Official and start clock, like a typical stage.
- - Participants: Driver registered for the test and co-driver(s).



Location Assistance Zone & Meeting place
Starting at 8:00 am, or after:



TD-1



TD-2

